

Quick Start Guide

Indoor/Outdoor Dual Lens
Pan/Tilt Security Camera

*Images may differ from actual products.
©2025 TP-Link 7106500019 REV1.0.0

01 / Set Up Your Camera

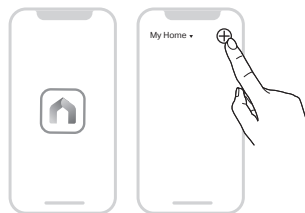
1. Download the App

Get the **Tapo** app from the App Store or Google Play, and log in.



2. Set Up

Tap the **+** button > Add Device in the app and select your model. Follow the app instructions to set up your camera.



02 / Installation Options

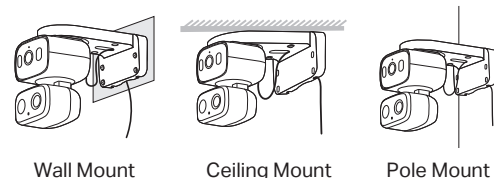
1. Set on a Table or Shelf

Place the camera on a flat surface like a table or shelf.



2. Mount on a Wall, Ceiling, or Pole

The bracket is designed for multiple mounting methods. Choose your preferred one and refer to the instructions on the following pages.

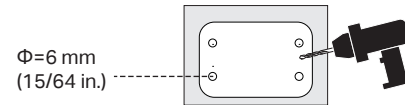


03 / Mount Your Camera

Option 1: Wall Mount

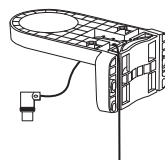
1. Drill Holes

Stick the mounting template for the wall mount to the desired place. Drill **4** screw holes according to the template.



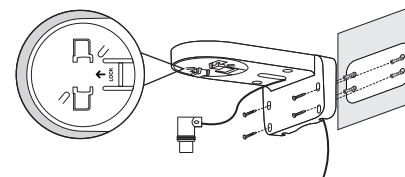
2. Route the Power Cord

Route the power cord through one of the grooves and the opening in the bracket.



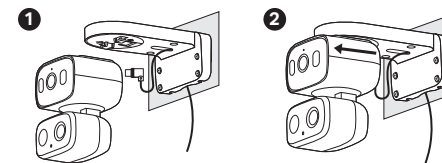
3. Install the Bracket

Rotate the snap-fit to the position as shown below. Then insert 4 anchors into the holes and use the screws to affix the bracket over the anchors.



4. Secure the Camera

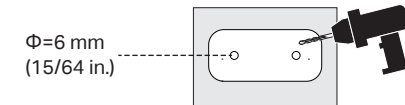
Plug the Type-C connector into the camera base. Align the snap-fit, then slide the base onto the bracket from inside out until secure.



Option 2: Ceiling Mount

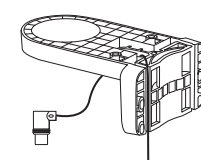
1. Drill Holes

Stick the mounting template for the ceiling mount to the desired place. Drill **2** screw holes according to the template.



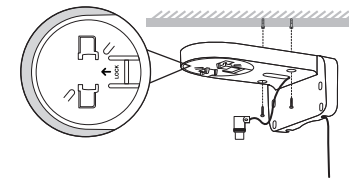
2. Route the Power Cord

Route the power cord through one of the grooves and the opening in the bracket.



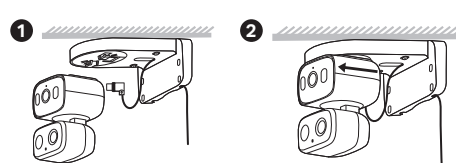
3. Install the Bracket

Rotate the snap-fit to the position as shown below. Then insert 2 anchors into the holes and use the screws to affix the bracket over the anchors.



4. Secure the Camera

Plug the Type-C connector into the camera base. Align the snap-fit, then slide the base onto the bracket from inside out until secure.

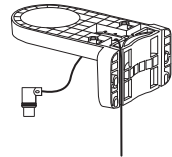


03 / Mount Your Camera

Option 3: Pole Mount

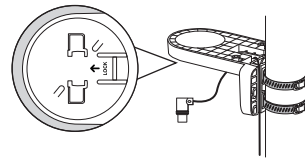
1. Route the Power Cord

Route the power cord through one of the grooves and the opening in the bracket.



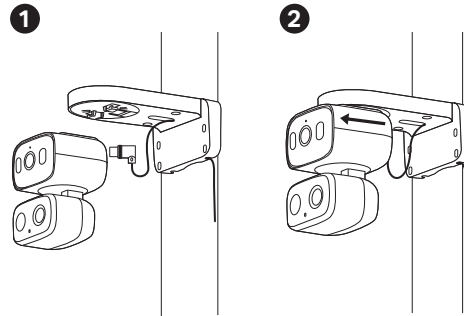
2. Install the Bracket

Rotate the snap-fit to the position as shown below. Mount the bracket on the pole using one pole-mounting loop* (loop width ≤ 12 mm).



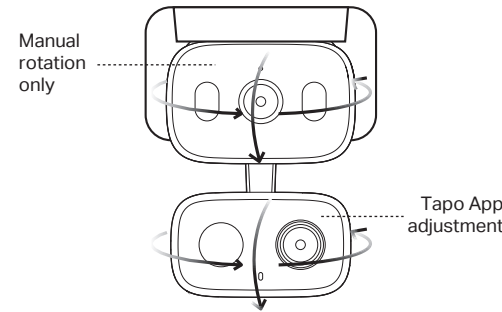
3. Secure the Camera

Plug the Type-C connector into the camera base. Align the snap-fit, then slide the base onto the bracket from inside out until secure.



How to Adjust the Camera

After installation, adjust the camera to your preferred angle for the best view.

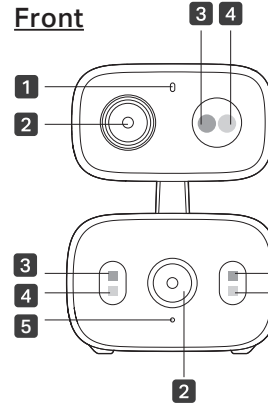


For technical support, user guides, FAQs, warranty, and more, please visit www.tapo.com/support/



Appearance

Front



1 System LED

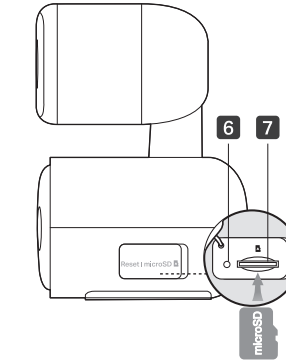
2 Lens

3 White Light LED

4 IR LED

5 Microphone

Side



*Open the silicone cover on the side to find the reset button and microSD card slot.

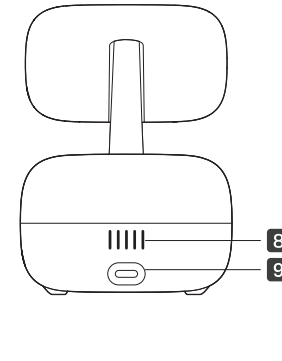
6 Reset Button

- Use a pin to press and hold for 5s: Reset Wi-Fi settings
- Use a pin to press and hold for 10s: Reset to factory settings

7 microSD Card Slot

Insert a microSD card (not included) and initialize it on the Tapo app for local recording.

Back



8 Speaker

9 USB Type-C Power Port

System LED Indication

Solid red	Starting up
Blinking red and green	Ready for setup
Blinking red slowly	Connecting to Wi-Fi
Solid amber	Connected to Wi-Fi
Solid green	Connected to the cloud
Blinking red quickly	Camera resetting
Blinking green quickly	Camera updating

Safety Information

- Adapter shall be easily accessible.
- Never touch the product with wet hands.
- Do not disassemble, repair or modify the product.
- Do not use any other chargers than those recommended.
- Do not use the device where wireless devices are not allowed.
- Do not use damaged charger or USB cable to charge the device.
- Do not use the product if the casing has been broken. Danger of electric shock.
- Use only the original power cable to ensure waterproof compliance.
- Keep the device away from fire or hot environments. DO NOT immerse in water or any other liquid.
- Use only power supplies which are provided by manufacturer and in the original packing of this product. If you have any questions, please don't



hesitate to contact us.

- Do not place near automatically controlled devices such as fire alarms. Radio waves emitted from this product may cause such devices to malfunction resulting in an accident.
- Observe restrictions on using wireless products in fuel depots, chemical plants or when blasting operations are in progress.
- Do not use liquid to clean the product. Only use a dry cloth.
- Never put metal objects inside the product. If a metal object enters the product turn off the circuit breaker and contact an authorised electrician.
- This product is not intended to be used when providing medical care. Consult the manufacturer of any personal medical devices, such as pacemakers or hearing aids to determine if they are adequately shielded from external RF (radio frequency) energy.
- Do not use this product in health care facilities. Hospitals or health care facilities may be using equipment that could be sensitive to external RF energy.
- Do not place heavy objects on top of the product.
- When you leave the product unused for a long time unplug the product from the power outlet.
- This product may interfere with other electronic products such as TV, radios, personal computers, phones or other wireless devices.
- Adapter should be used indoors where the ambient temperature is lower than or equal to 40 °C.
- Operating Temperature: -20 °C ~ 50 °C (-4 °F ~ 122 °F)
- The camera shall be installed at a height no higher than 2 meters. Please read and follow the above safety information when operating the device. We cannot guarantee that no accidents or damage will occur due to improper use of the device. Please use this product with care and operate at your own risk.

TP-Link hereby declares that the device is in compliance with the essential requirements and other relevant provisions of directives 2014/53/EU, 2009/125/EC, 2011/65/EU and (EU)2015/863. The original EU declaration of conformity may be found at <https://www.tapo.com/support/ce>

TP-Link hereby declares that the device is in compliance with the essential requirements and other relevant provisions of the Radio Equipment Regulations 2017. The original UK declaration of conformity may be found at <https://www.tapo.com/support/ukca/>

This equipment has been tested and found to comply with the limits for a Class B digital device, pursuant to part 15 of the FCC Rules. These limits are designed to provide reasonable protection against harmful interference in a residential installation. This equipment generates, uses and can radiate radio frequency energy and, if not installed and used in accordance with the instructions, may cause harmful interference to radio communications. However, there is no guarantee that interference will not occur in a particular installation. If this equipment does cause harmful interference to radio or television reception, which can be determined by turning the equipment off and on, the user is encouraged to try to correct the interference by one or more of the following measures:

- Reorient or relocate the receiving antenna.
- Increase the separation between the equipment and receiver.
- Connect the equipment into an outlet on a circuit different from that to which the receiver is connected.
- Consult the dealer or an experienced radio/ TV technician for help.

FCC RF Radiation Exposure Statement:
This equipment complies with FCC RF radiation exposure limits set forth for an uncontrolled environment. This device and its antenna must not be co-located or operating in conjunction with any other antenna or transmitter.
"To comply with FCC RF exposure compliance requirements, this grant is applicable to only Mobile Configurations. The antennas used for this transmitter must be installed to provide a separation distance of at least 20 cm from all persons and must not be co-located or operating in conjunction with any other antenna or transmitter."

This device complies with part 15 of the FCC Rules. Operation is subject to the following two conditions:
1. This device may not cause harmful interference.
2. This device must accept any interference received, including interference that may cause undesired operation.
Any changes or modifications not expressly approved by the party responsible for compliance could void the user's authority to operate the equipment.
Note: The manufacturer is not responsible for any radio or TV interference caused by unauthorized modifications to this equipment. Such modifications could void the user's authority to operate the equipment.

Canadian Compliance Statement
This device contains licence-exempt transmitter(s)/receiver(s) that comply with Innovation, Science and Economic Development Canada's licence-exempt RSS(s). Operation is subject to the following two conditions:
(1) This device may not cause interference.
(2) This device must accept any interference, including interference that may cause undesired operation of the device.

L'émetteur/récepteur exempt de licence contenu dans le présent appareil est conforme aux CNR d'Innovation, Sciences et Développement économique Canada applicables aux appareils radio exempts de licence. L'exploitation est autorisée aux deux conditions suivantes :
1) L'appareil ne doit pas produire de brouillage;
2) L'appareil doit accepter tout brouillage radioélectrique subi, même si le brouillage est susceptible d'en compromettre le fonctionnement.

Radiation Exposure Statement:
This equipment complies with IC radiation exposure limits set forth for an uncontrolled environment. This equipment should be installed and operated with minimum distance 20cm between the radiator & your body.
Déclaration d'exposition aux radiations:
Cet équipement est conforme aux limites d'exposition aux rayonnements IC établies pour un environnement non contrôlé. Cet équipement doit être installé et utilisé avec un minimum de 20 cm de distance entre la source de rayonnement et votre corps.

Industry Canada Statement
CAN ICES-003 (B)/NMB-003(B)

NCC notice

取得審驗證明之低功率射頻器材，非經核准，公司、商號或使用者均不得擅自變更頻率、加大功率或變更原設計之特性及功能。
低功率射頻器材之使用不得影響飛航安全及干擾合法通信；經發現有干擾現象時，應立即停用，並改善至無干擾時方得繼續使用。
前述合法通信，指依電信管理法規定作業之無線電通信。
低功率射頻器材須忍受合法通信或工業、科學及醫療用電波輻射性電機設備之干擾。為避免本器材影像畫面遭偷窺或擷取，本器材使用者應先修改預設密碼，並定期更新密碼。

安全諮詢及注意事項

請使用原裝電源供應器或只能按照本產品注明的電源類型使用本產品。
清潔本產品之前請先拔掉電源線。請勿使用液體、噴霧清潔劑或濕布進行清潔。注意防潮，請勿將水或其他液體潑灑到本產品上。
插槽與開口供通風使用，以確保本產品的操作可靠並防止過熱，請勿堵塞或覆蓋開口。請勿將本產品置放於靠近熱源的地方。除非有正常的通風，否則不可放在密閉位置中。不要私自拆開機殼或自行維修，如產品有故障請與原廠或代理商聯繫。

RoHS限用物質聲明請查看: <https://www.tp-link.com/tw/support>（型號/技術支援）